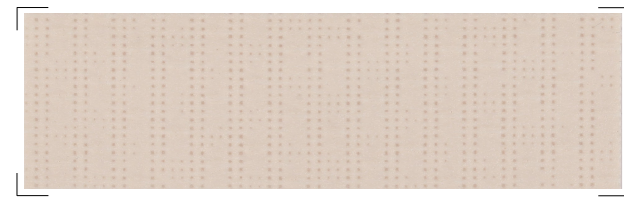


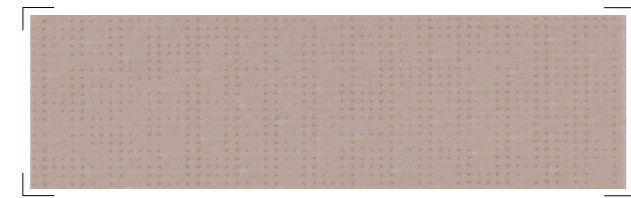
White 267 cm

W96-8102



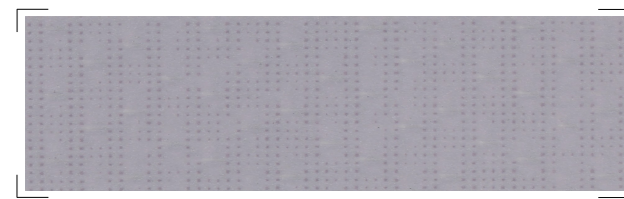
Off white 267 cm

W96-1103



Vanilla 267 cm

W96-8861



Cloud 267 cm

W96-2171



Anthracite 267 cm

W96-2047

**Technical properties**

Product Specification	Value	Standards
Weight	620 g/m <sup>2</sup>	EN ISO 2286-2
Thickness	0,56 mm	
Width	267 cm	
Standard format length	35 lm	
Tensile strength (warp/weft)	220/220 daN/5 cm	EN ISO 1421
Tear strength (warp/weft)	25/20 daN	DIN 53.363
Flame retardancy	M2	NFP 92-507
Warrenty	5 years	

**Applications**



	<b>Soltis</b> Horizon 86	<b>Soltis</b> Perform 92	<b>Soltis</b> Lounge 96	<b>Soltis</b> Veozip
	<b>Technical properties</b>	<b>Technical properties</b>	<b>Technical properties</b>	<b>Technical properties</b>
Openess factor	14%	4%	4%	5%
Weight	380 g/m <sup>2</sup>	420 g/m <sup>2</sup>	400 g/m <sup>2</sup>	600 g/m <sup>2</sup> EN ISO 2286-2
Thickness	0,45 mm	0,45 mm	0,45 mm	0,90 mm
Width	177 cm - 267 cm	177 cm - 267 cm	120 cm - 267 cm	290 cm - 320 cm*
	<b>Length of rolls</b>	<b>Length of rolls</b>	<b>Length of rolls</b>	<b>Length of rolls</b>
Standard format length in 177 cm	50 lm	50 lm		290 cm • 42 lm
Standard format length in 267 cm	40 lm	40 lm	40 lm	320 cm • 35 lm
	<b>Physical properties</b>	<b>Physical properties</b>	<b>Physical properties</b>	<b>Physical properties</b>
Tensile strength (warp/weft)	230/160 daN/5 cm	310/210 daN/5 cm	220/220 daN/5 cm	250/170 daN/5 cm EN ISO 1421
Tear strength (warp/weft)	45/20 daN	45/20 daN	30/25 daN	25/25 daN DIN 53.363
	<b>Flame retardancy</b>	<b>Flame retardancy</b>	<b>Flame retardancy</b>	<b>Flame retardancy</b>
Rating	<b>B1</b> /DIN 4102-1 • BS 7837 • BS 5867 • <b>Schwerbrennbar-Q1-Tr1</b> /ONORM A 3800-1 • <b>Classe 1</b> /UNI 9177-87 • <b>M1</b> /UNE 23.727-90 • <b>VKF 5.2</b> /SN 198898 • 1530.3/AS/NZS • <b>G1</b> /GOST 30244-94 • <b>Method 1</b> /NFPA 701 - CSFMT19 • <b>Class A</b> /ASTM E84	<b>M1</b> /NFP 92-507 • <b>B1</b> /DIN 4102-1 • BS 7837 • BS 5867 • <b>Schwerbrennbar-Q1-Tr1</b> /ONORM A 3800-1 • <b>Classe 1</b> /EN 13373 • <b>M1</b> /UNE 23.727-90 • <b>VKF 5.3</b> /SN 198898 • 1530.3/AS/NZS • <b>G1</b> /GOST 30244-94 • <b>Method 1</b> /NFPA 701 - CSFMT19 • <b>Class A</b> /ASTM E84	<b>M2</b>	<b>M1</b> /NFP 92-507 — <b>B1</b> /DIN 4102-1 — BS 7837 — BS 5867 — <b>CUNO</b> /UNI 91-77 — <b>Classe 1</b> /EN 13373 • <b>Method 1</b> /NFPA 701 — CSFMT19 — <b>Class A</b> /ASTM E84
Euroclass	<b>B-s2,d0</b>	<b>B-s2,d0</b>	<b>NFP 92-507</b>	<b>B-s2,d0</b> En 13501-1
	<b>Management systems</b>	<b>Management systems</b>	<b>Management systems</b>	<b>Management systems</b>
For quality				ISO 9001
	<b>Certifications, labels, warranties, recycling</b>	<b>Certifications, labels, warranties, recycling</b>	<b>Certifications, labels, warranties, recycling</b>	<b>Certifications, labels, warranties, recycling</b>

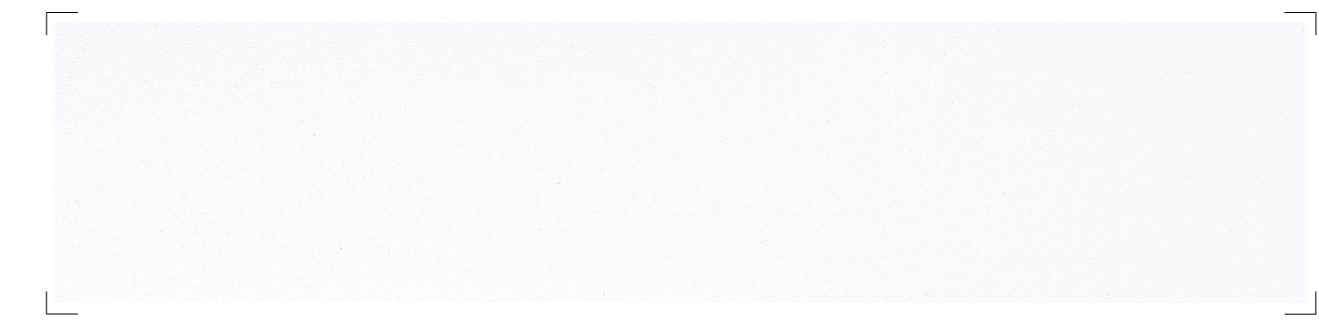


With S+ Serge Ferrari goes further than the standards... (consult us for further information)

The technical data above are averaged values with a +/- 5% tolerance. The buyer of our products is fully responsible for their application and their transformation with regard to any possible third party. The buyer of our products is responsible for their implementation and installation according to the standards, workmanship and safety regulations in force in destination countries. For information on our contractual warranty, please refer to the relevant terms and conditions. The values quoted above represent results of tests performed in compliance with common design practices and are provided for information only to enable customers to make the best use of our products. Our products are subject to changes based on technical advances and we reserve the right to modify their characteristics at any time. The buyer of our products is responsible for checking the validity of the above data. For metallic and interferential colours, a difference in shade may be observed in different roll widths for the same reference: small width (1770 mm) and large width (2670 mm). We advise strongly against combined assembly of these.



Transparency  
Thermal Comfort  
Translucent  
Blackout



White 267 cm

622-50537



Quartz 267 cm

622-50539



Grey 267 cm

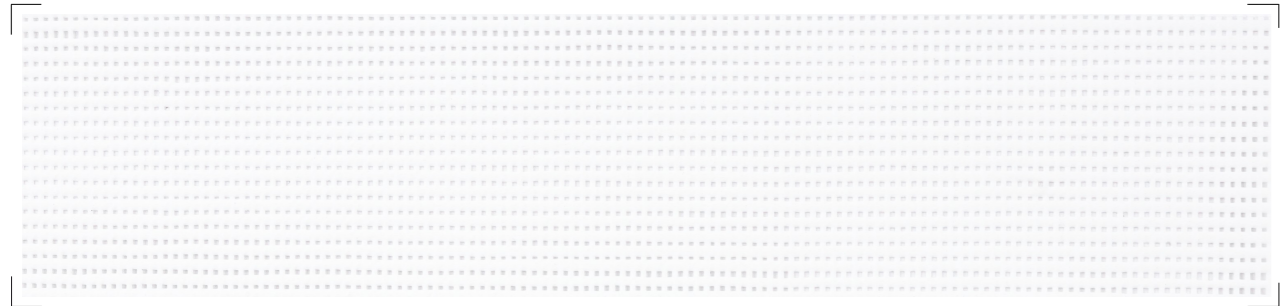
622-50542

**Technical properties**

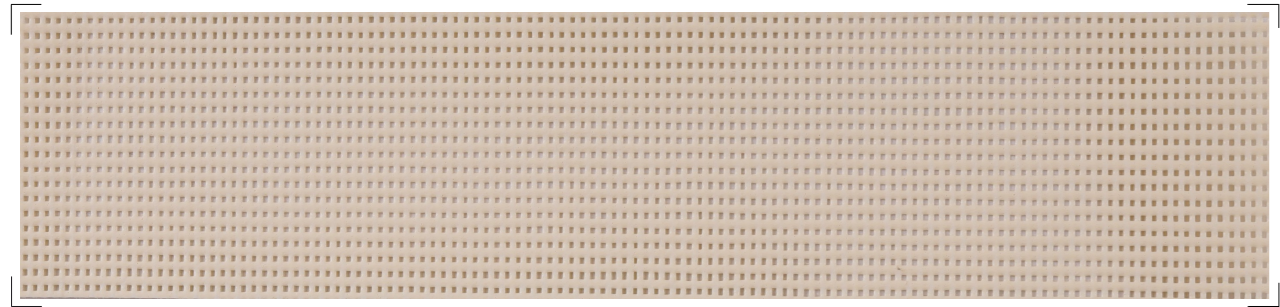
Product Specification	Value	Standards
Weight	750 g/m <sup>2</sup>	EN ISO 2286-2
Thickness	0,63 mm	
Width	267 cm	
Standard format length	50 lm	
Tensile strength (warp/weft)	230/220 daN/5 cm	EN ISO 1421
Tear strength (warp/weft)	20/20 daN	DIN 53.363
Flame retardancy	M2/NFP 92-507 • B1/DIN 4102-1 • M2/UNE 23.727-90 • BS 7837 • 1530. 2 & 3/AS NZS	
Warrenty	5 years	

**Applications**

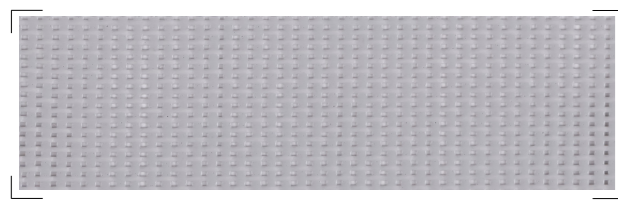




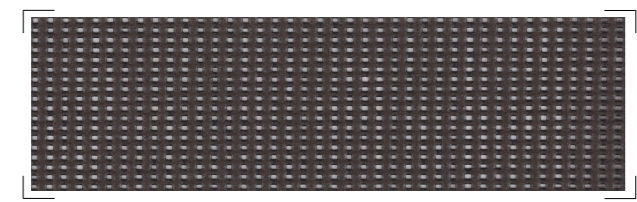
White 177 cm — 267 cm 86-2044



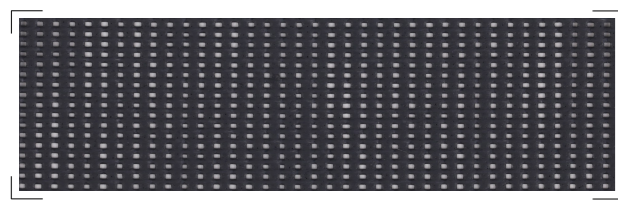
Champagne 177 cm — 267 cm 86-2175



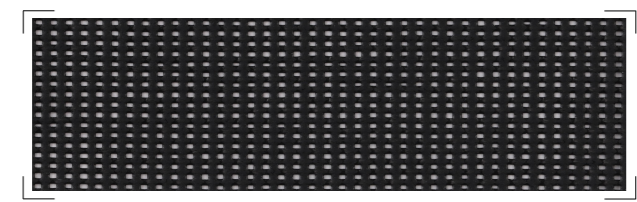
Boulder 177 cm — 267 cm 86-2171



Bronze 177 cm — 267 cm 86-2043



Anthracite 177 cm — 267 cm 86-2047



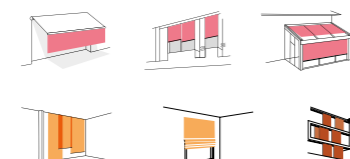
Deep black 177 cm — 267 cm 86-51176

• Solar and light properties (EN 14501)

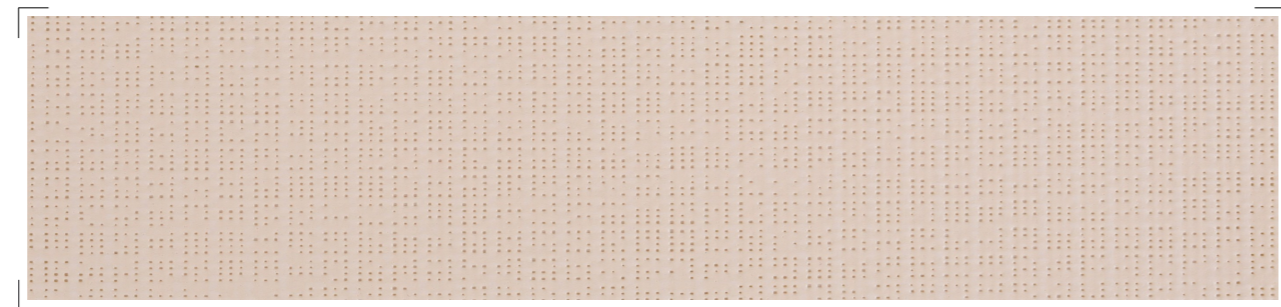
Product	Color	Width (cm)		TS	RS	AS	TV n-h	EN 13363-2** Type "D" glazing	
		177	267					g <sub>ext</sub> *	g <sub>int</sub> *
		86-2044	White					•	•
86-2175	Champagne	•	•	30	57	13	28	0.11	0.16
86-2171	Boulder	•	•	22	36	42	20	0.08	0.21
86-2043	Bronze	•	•	15	11	74	15	0.07	0.28
86-2047	Anthracite	•	•	17	7	76	17	0.07	0.28
86-51176	Deep black	•	•	14	5	81	14	0.07	0.27

TS: Solar Transmission (%)  
RS: Solar Reflection (%)  
AS: Solar Absorption (%)  
TS + RS + AS = 100% of incident energy  
g<sub>ext</sub>\*: External solar factor  
g<sub>int</sub>\*: Internal solar factor  
Type « C » glazing: insulating, slightly emissive double glazing in position 3 (4 + 16 + 4; Argon-filled - g = 0.59 - U = 1.2).

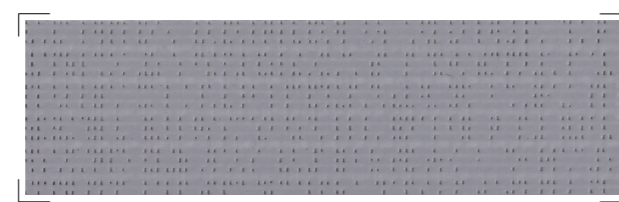
Applications



White 177 cm — 267 cm 92-2044



Champagne 177 cm — 267 cm 92-2175



Boulder 177 cm — 267 cm 92-2171



Bronze 177 cm — 267 cm 92-2043



Anthracite 177 cm — 267 cm 92-2047



Deep black 177 cm — 267 cm 92-51176

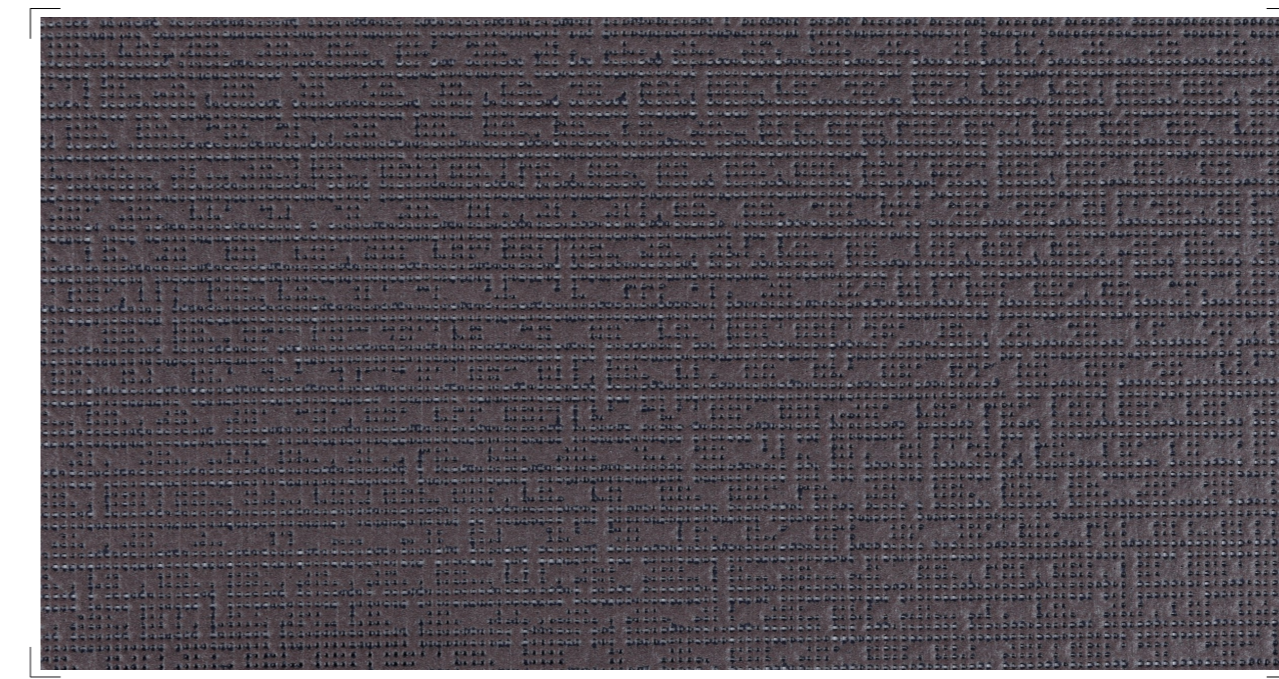
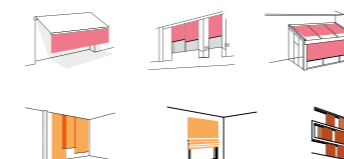
• Solar and light properties (EN 14501)

Product	Color	Width (cm)		TS	RS	AS	TV n-h	EN 13363-2* Type "D" glazing	
		177	267					g <sub>ext</sub> *	g <sub>int</sub> *
		92-2044	White					•	•
92-2175	Champagne	•	•	19	65	16	17	0.07	0.14
92-2171	Boulder	•	•	8	41	51	6	0.04	0.20
92-2043	Bronze	•	•	4	13	83	4	0.04	0.28
92-2047	Anthracite	•	•	5	8	87	5	0.04	0.28
92-51176	Deep black	•	•	3	5	92	3	0.03	0.29

TS: Solar Transmission (%)  
RS: Solar Reflection (%)  
AS: Solar Absorption (%)  
TS + RS + AS = 100% of incident energy  
TV n-h = Normal-hemispherical visible light transmission (%)  
A = Aluminium surface exposed to the sun  
B = Coloured surface exposed to the sun  
g<sub>ext</sub>\*: External solar factor  
g<sub>int</sub>\*: Internal solar factor

Takes into account the spectral values of glazing transmission and reflection + blind complex for calculating the solar factor g<sub>tot</sub>.  
Type "D" glazing: insulating double glazing with low emissivity on surface 2 (4 + 16 + 4; Argon filling) g = 0.52 - U = 1.1

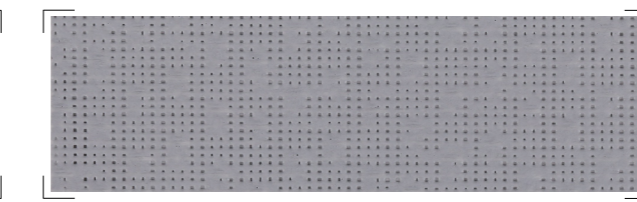
Applications



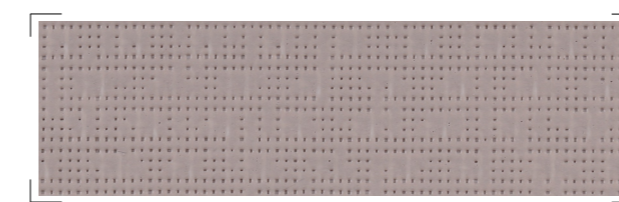
Bronze 120 cm — 267 cm 96-2043



Off white 120 cm — 267 cm 96-1103



Boulder 120 cm — 267 cm 96-2171



Sandy beige 120 cm — 267 cm 96-2135



Anthracite 120 cm — 267 cm 96-2047

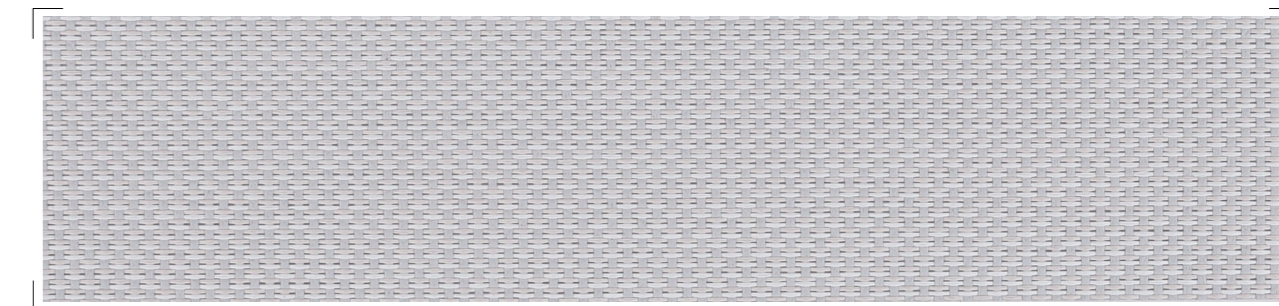
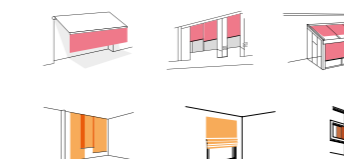
• Solar and light properties (EN 14501)

Product	Color	Width (cm)		TS	RS	AS	TV n-h
		120	267				
		96-2043	Bronze				
96-1103	Off white	•	•	21	64	15	18
96-2171	Boulder	•	•	16	55	29	7
96-2135	Sandy beige	•	•	16	55	29	7
96-2047	Anthracite	•	•	5	8	87	4

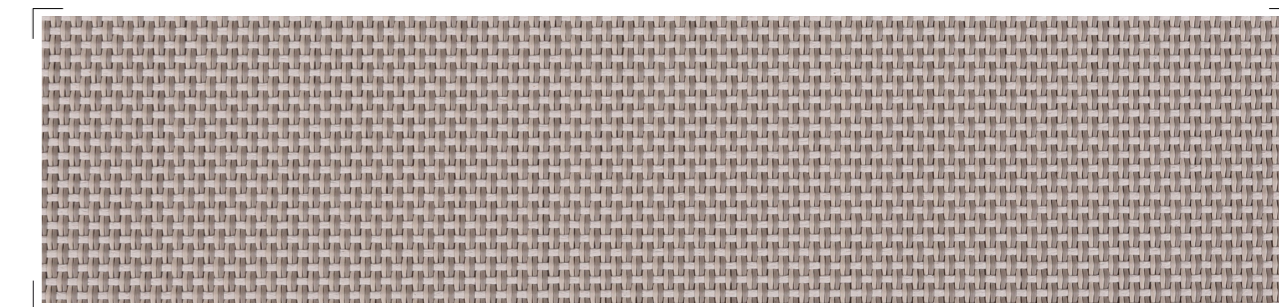
TS: Solar Transmission (%)  
RS: Solar Reflection (%)  
AS: Solar Absorption (%)  
TS + RS + AS = 100% of incident energy

TV n-h: Normal-hemispherical visible light transmission (%)  
TV n-n: Normal-normal visible light transmission (%)

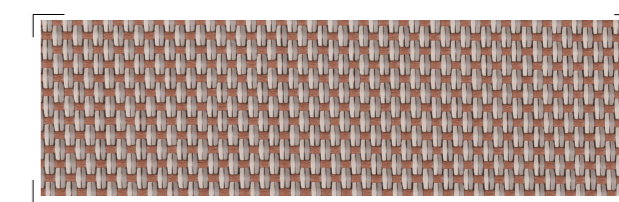
Applications



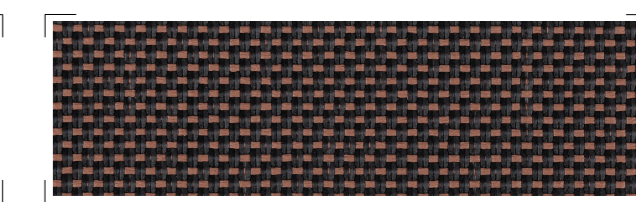
Frost white 290 cm — 320 cm 7605-51184



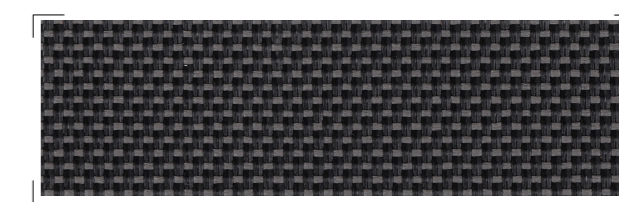
Natural 290 cm — 320 cm 7605-51187



Macadamia 290 cm — 320 cm 7605-51188



Sandalwood 290 cm — 320 cm 7605-51196



Grey pepper 290 cm — 320 cm 7605-51197



Graphite black 290 cm — 320 cm 7605-51198

• Solar and light properties (EN 14501)

Product	Color	Width (cm)		TS	RS	AS	TV n-h
		290	320				
		51184	Frost white				
51187	Natural	•	•	7	37	56	7
51188	Macadamia	•	•	5	29	66	4
51196	Sandalwood	•	•	6	10	84	6
51197	Grey pepper	•	•	5	8	87	5
51198	Graphite black	•	•	5	5	90	5

TS: Solar Transmission (%)  
RS: Solar Reflection (%)  
AS: Solar Absorption (%)  
TV n-h = Normal-hemispherical visible light transmission (%)  
g<sub>ext</sub>\*: Outdoor solar factor

Consider the spectral transmission and reflection values for the glazing + blind combination to calculate the solar factor g<sub>tot</sub>.  
Glazing type:  
« C »: Low emission, insulating double glazing - face 3 (4 + 16 + 4; argon-filled) g = 0.59 - U = 1.2  
« D »: Low emission, insulating double glazing - face 2 (4 + 16 + 4; argon-filled) g = 0.32 - U = 1.1

Applications

